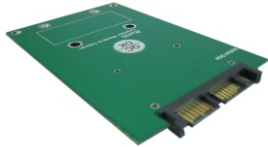


AD763FA9 Assembly Guide

Before Assembly:

1. Please check the accessory list before assembly. Contact your local distributor if you find any parts missing.
2. Please read through the installation guide.



AD763FA9 Top Side



AD763FA9 Bottom Side

Accessory Package

(1) M2x3 Screw *3pcs
P/N: 13MISW00005M11



[for Full size SSD]

(2) M2x6mm(H) screw *3pcs
P/N: 13MISW00001M11



[for Half size SSD]

(3) Copper Nut /H: 4.0mm *3pcs
P/N: 13MICA00001M05



[for Half size SSD]

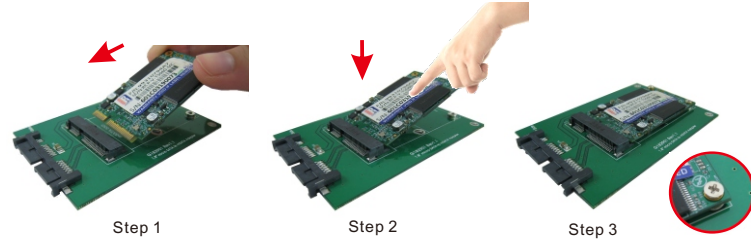
(4) M2 nut *3pcs
P/N: 13MINU00001M11



[for Half size SSD]

The above accessories parts are all have extra 1pc for spare part.

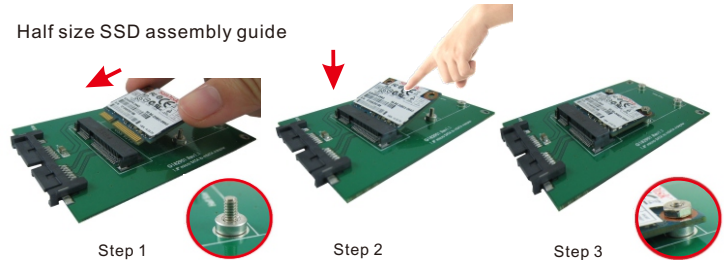
Full size SSD assembly guide



- Step 1. Insert mSATA SSD into mSATA (mini PCI-e) socket.
Step 2. Press mSATA SSD down and aim to the copper nuts below.
Step 3. Fix mSATA SSD on the adapter with 2pcs of M2*3 screws.

(If your mSATA SSD is half size form factor, pls use extra 2pcs of copper nuts as stand like mounted ones.)

Half size SSD assembly guide



- Step1: Put 2pcs of copper nuts(3) on the holes for the half size mSATA SSD and fix with 2pcs of M2x6mm(2) screws.
Insert mSATA SSD into mini PCI-e socket.
Step 2. Press mSATA SSD down and aim to the copper nuts below.
Step 3. Fix mSATA SSD on the adapter with 2pcs of M2*3 screws.